



The Big Dig Tunnel Survival Guide in 4 Tips 26 bullets and one graphic image

UPDATE 2007 - We've been waiting for the State of Massachusetts to offer something like this but it hasn't happened yet. The City of Boston did the right thing. Their "Ready Boston" consumer guide to evacuating the city in case of a Hurricane Katrina type storm was distributed thoroughly, but not one page mentioned the topics this document covers. We hope you find this file useful. Drive safely. It matters!

What to do when you are entering a tunnel

- Listen to the radio station indicated by the sign.
- Switch on your headlights.
- Take off your sunglasses.
- Obey traffic lights and signs.
- Keep a safe distance from the vehicle in front.
- Do not overtake if there is only one lane in each direction.
- Do not turn or reverse.
- Do not stop, except in an emergency.



What to do in traffic congestion

- Switch on your warning lights
- Keep your distance, even if you are moving slowly or have stopped
- Switch off your engine, if the traffic has come to a halt
- Listen to messages on the radio
- Follow the instructions given by tunnel officials or obey variable message signs



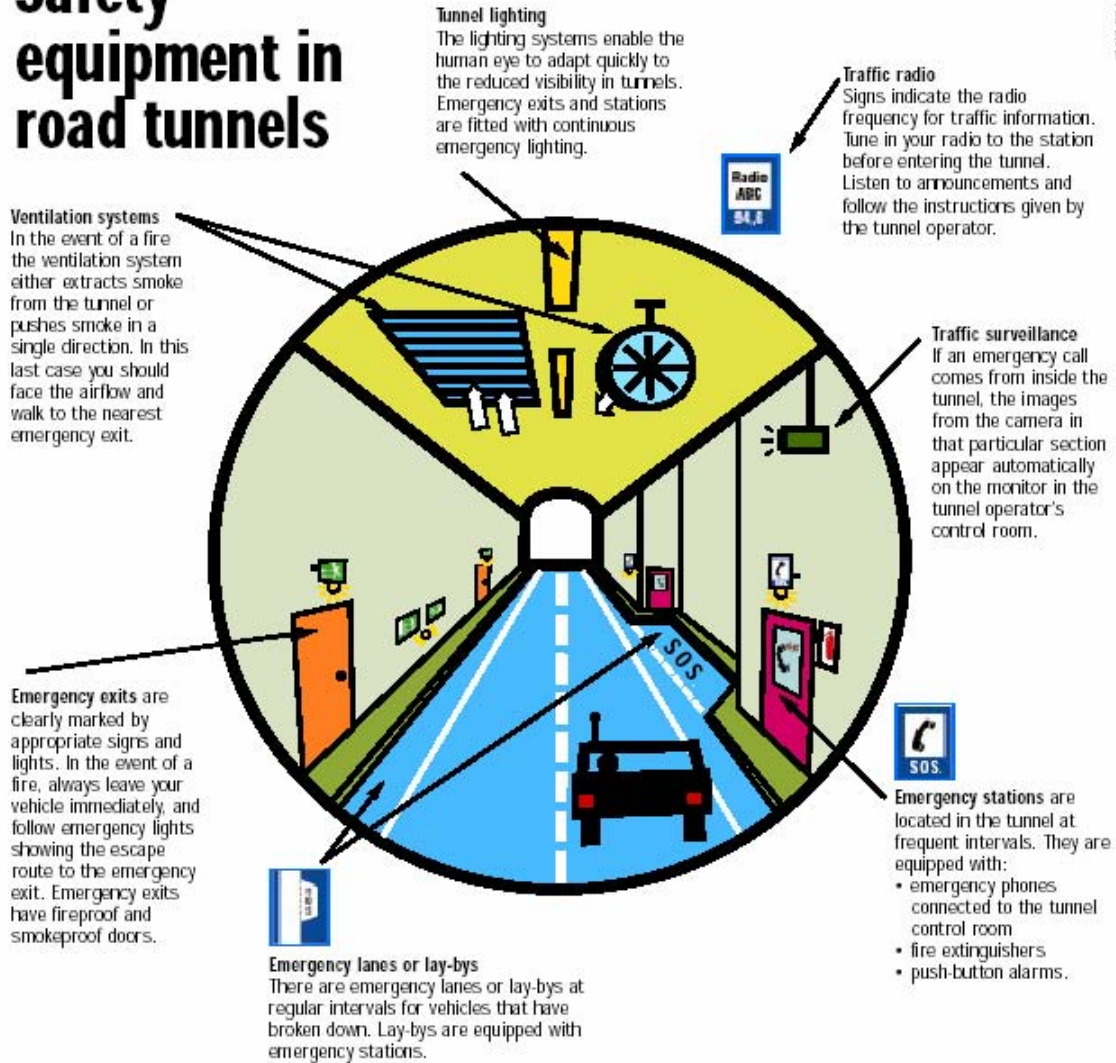
What to do in the event of breakdown or accident

- Switch on your warning lights
- Try to move your vehicle to an emergency lane or lay-by or at least to the hard shoulder
- Switch off the engine
- Leave your vehicle
- If necessary and possible, give first aid to injured people
- Call for help from an emergency station

What to do if your or another vehicle is on fire

- If your vehicle is on fire, if possible drive out of the tunnel
- If that is not possible, pull over to the side, switch off the engine and
- leave the vehicle immediately
- Call for help from an emergency station
- If you can, put out the fire using an extinguisher available in the tunnel
- If you can, give first aid to injured people
- Go, as soon as possible, to an emergency exit

Safety equipment in road tunnels



European Commission Energy and Transport DG • B-1049 Brussels
http://europa.eu.int/comm/dgs/energy_transport/index_en.html